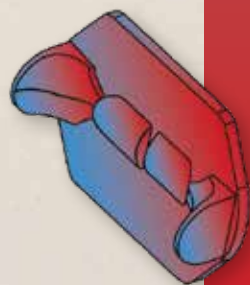




z A Teschio e denti, 1489.

RL 19058 v (B. 41 r; K/P 42 v).

Il vacuo della casa dell'occhio, e 'i vacuo dell'osso sostenitore della guancia, e quello del naso e della bocca sono d'eguale profondità e terminano sotto il senso comune [sede centrale delle sensazioni] per linea perpendicolare. E ciascuna d'esse vacuità ha tanto di profondità quant'è la terza parte del volto dell'omo, cioè dal mento a capegli.



A NEW SOLUTION  
THE TRUNK TOTAL SUPPORT

# A NEW SOLUTION

## TTS TRUNK TOTAL SUPPORT

### Positioning kit for the trunk with modular inserts



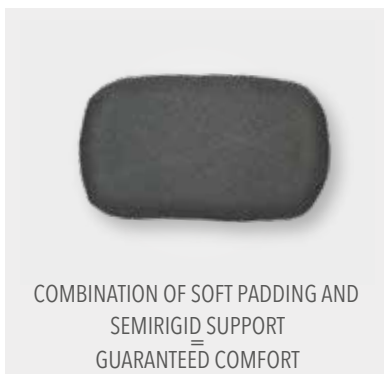
## Why Facile ?



- FINALLY A POSITIONING BACKREST WITHOUT MOUNTING HARDWARE AND ALUMINIUM SHELL
- LIGHTWEIGHT, COMFORTABLE, SAFE
- FLEXIBLE TO MAXIMISE MOVEMENTS
- PERFECT FIT, SUPPORT AND CONTROL TO THE TRUNK, INDIVIDUALLY AND IMMEDIATELY ADAPTABLE WITHOUT TOOLS



STRUCTURAL KIT,  
MODULAR AND MODIFIABLE  
WITH 6 INSERTS



COMBINATION OF SOFT PADDING AND  
SEMIRIGID SUPPORT  
GUARANTEED COMFORT



AVAILABLE WITH OR WITHOUT  
MOUNTING MULTI-TENSION SYSTEM  
\* IF PROVIDED, THE BACKREST IS DEPTH,  
HEIGHT AND INCLINATION ADJUSTABLE

## CLINICAL INFORMATION / DESTINATION OF USE

The trunk positioning system Inserto Back Facile is recommended preferably, but not exhaustively for:

- Active wheelchair users who need trunk support to complete the stabilizing effects of the cushion.
- Users with mild/high instability of the rachis.
- Users with deformities of the rachis.

**TTS** EMBRACING SHAPES

## TECHNICAL FEATURES

- Structural Kit composed by:
  - Flat base of construction and 6 polyethylene closed celled inserts, modifiable and configurable, useful to individually support or correct the posture of the trunk during the life time use.
- Three layers padding composed by a self-modelling polymeric foam, reticulated foam for ventilation and polyurethane elastic open celled foam.
- Microclimatic ventilated cover, fireproof and antibacterial. It can be washed in tepid water with a gentle detergent. Do not tumble dry. The fabric doesn't require the use of disinfectants.
- The optional mounting multi-tension strap system is available in two versions:
  - Single straps (which number depends on the backrest height).
  - The combination of a central double strap and single straps positioned on the upper and/or lower part of the backrest.

\* Follow the information contained in the product technical sheet of the instruction of use manual to install the backrest on the wheelchair.

## WARNINGS

The trunk positioning system Inserto Back Facile, in its design integrity and numerical and dimensional completeness of the supplied components (structural kit, padding kit, cover) can be easily adapted to sizes/morphology/deformities of the user. This kind of operations make the commissioning referable to a serial device.

Alternatively

The commissioning of the Positioning System Inserto Back Facile, deprived or modified, even partially, of its design integrity of numerical and dimensional completeness of the supplied components, built as per written prescription of a professional operator in function of the anatomy/morphology/deformities of the user, through the measurement detection and direct trials, can be referable to a custom device.

**SPARE PARTS** ■ Padding ■ Cover ■ Multi-tension strap system with single straps ■ Multi-tension strap system with central double strap and single straps

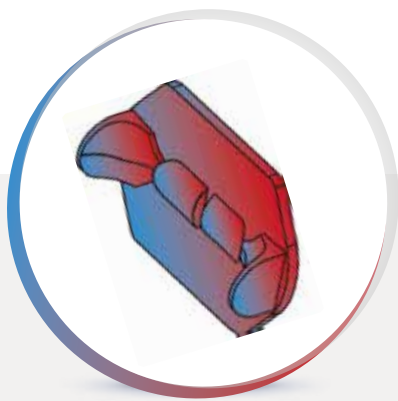


FACILE



## Inserto Facile

6 MODULAR AND CONFIGURABLE INSERTS



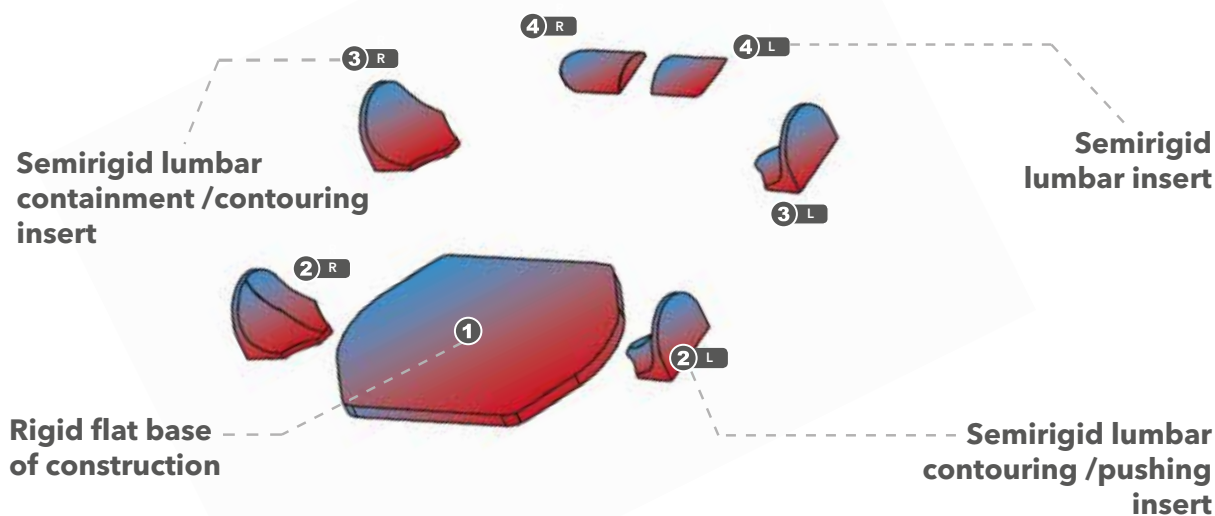
MICROCLIMATIC  
VENTILATED  
COVER

° Each postural unit is ordered based upon the size of mobility/wheelchair device

INSERTO Back Facile (Structural kit with padding, cover, multi-tension strap system with H 10 cm double strap and H 5 cm single straps)															
Model (cm)	3215	3221	3227	3618	3624	3630	4018	4024	4030	4418	4424	4430	4824	4830	4836
Effective shell width (cm)	27	27	27	31	31	31	35	35	35	39	39	39	43	43	43
Effective shell height (cm)	15	21	27	18	24	30	18	24	30	18	24	30	24	30	36
*Effective wheelchair external tubes width	32-34	32-34	32-34	36-38	36-38	36-38	40-42	40-42	40-42	44-46	44-46	44-46	48-50	48-50	48-50
H 5 cm single straps	3 straps	4 straps	5 straps	3 straps	4 straps	5 straps	3 straps	4 straps	5 straps	3 straps	4 straps	5 straps	4 straps	5 straps	6 straps
H 10 cm double central strap and H 5 cm single straps	✗	✓	✓	✗	✓	✓	✗	✓	✓	✗	✓	✓	✓	✓	✓

\* indicative values

conversion table	inches	6	7	8	9,5	10,5	11	12	12,5	14	16
	cm	15	18	21	24	27	28	30	32	36	40



For partially sighted users this document can be visualised in PDF format on the web site [www.versainserto.com](http://www.versainserto.com) with the possibility to enlarge the text.



MANUFACTURED BY

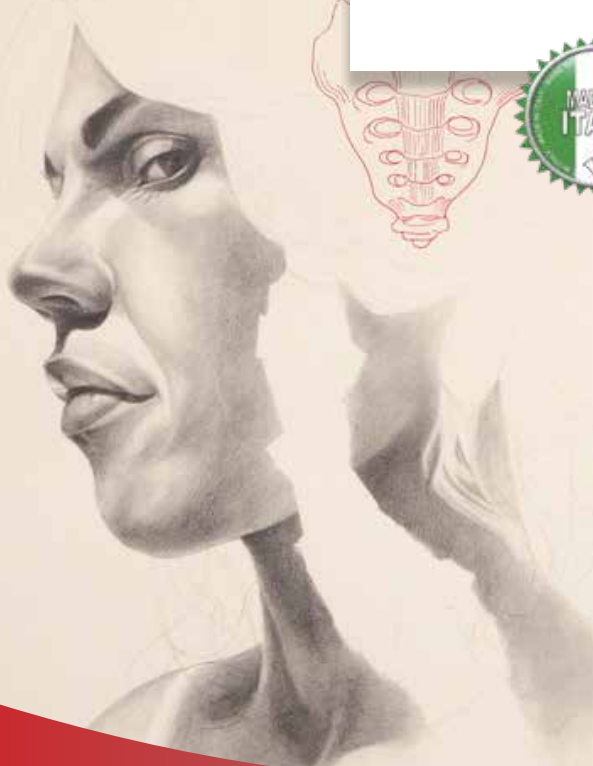


Pro Medicare srl

Via Montagna Z.I. - Lotto 41  
72023 Mesagne (BR) - ITALY  
Tel. +(39) 0831 777840  
Email: sales@promedicare.it  
www.promedicare.eu

CERTIFIED COMPANY WITH QUALITY  
MANAGEMENT SYSTEM ISO 9001 / EN ISO 13485

CERTIFIED  
ISO 9001  
ISO 13485



DISTRIBUTED BY



Medical device marked CE  
in accordance with the  
regulation (UE) 2017/745

CE 2 YEAR WARRANTY

[www.versainserito.com](http://www.versainserito.com)